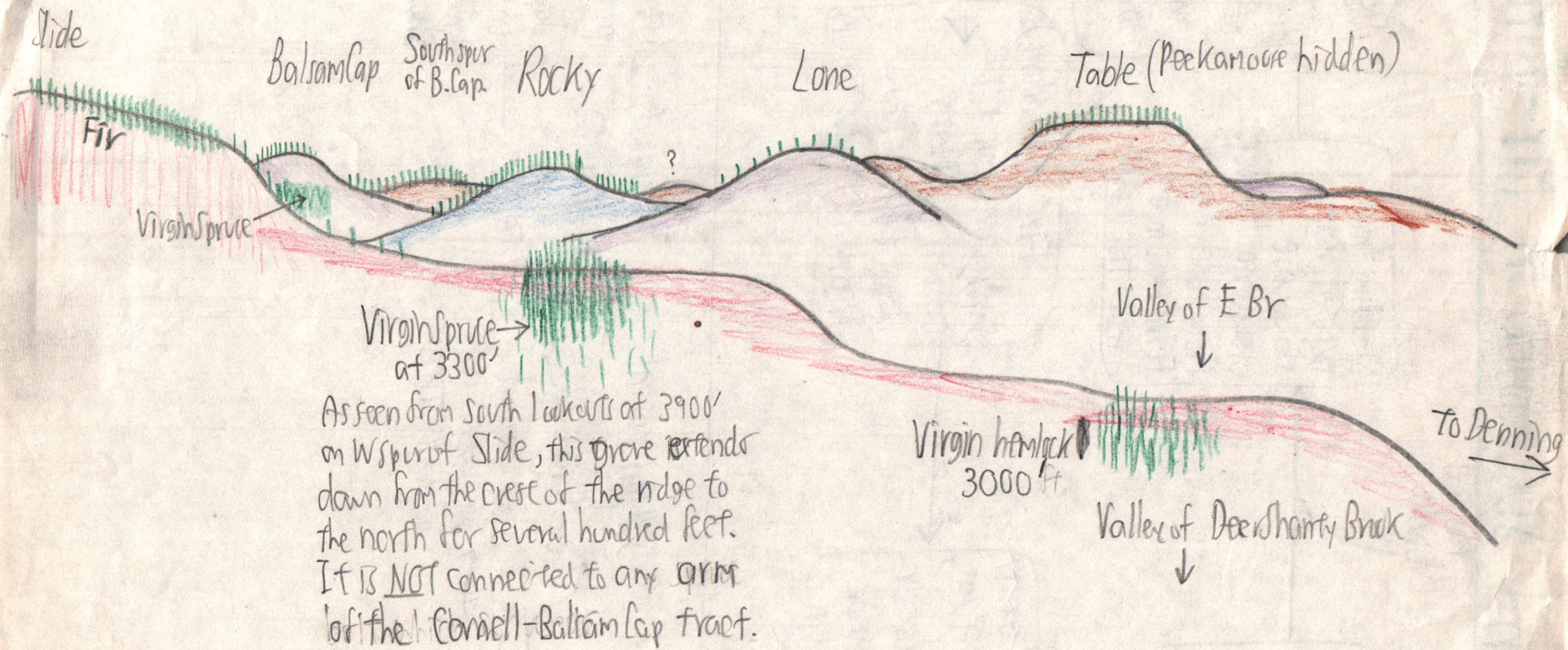


Virgin Spruce Grove on Slide's Shanty Brook Spur

View from Lookout above 3rd Ledge, 3600, off Curtis Trail.



As seen from South Lookouts at 3900' on W spur of Slide, this grove extends down from the crest of the ridge to the north for several hundred feet. It is NOT connected to any arms of the Connell-Balsam Cap tract.

169-4

Climax and Succession in Fir-Birch

164-4A

Partial
Blowdown

Mature unevenaged
fir-birch
Semi-open canopy.
Medium repro.
Medium dead trees.

Standing trees
exposed, many
slowly die.
Ground veg. drier out.
Many fallen trees.
Ferns move in &
hinder tree repro.

Nearby seed trees
(whichever they be)
determine nature
of tree reproduction.
Can be mostly fir,
mostly birch, or a
mixture.

Fewer trees. Canopy
opens. Larger trees,
as well as younger.
Ferns become more
abundant again

Firs (if abundant)
Sapling in dense copse
competition. Many
dead & dying trees.
Nearly continuous canopy

A. Slide #47 (Cox Kill Map) projected independently and simultaneously along with the other slides on a second machine and screen.

B. Cox Kill from the east side
#46
Mature climax
balsam-birch
stand

